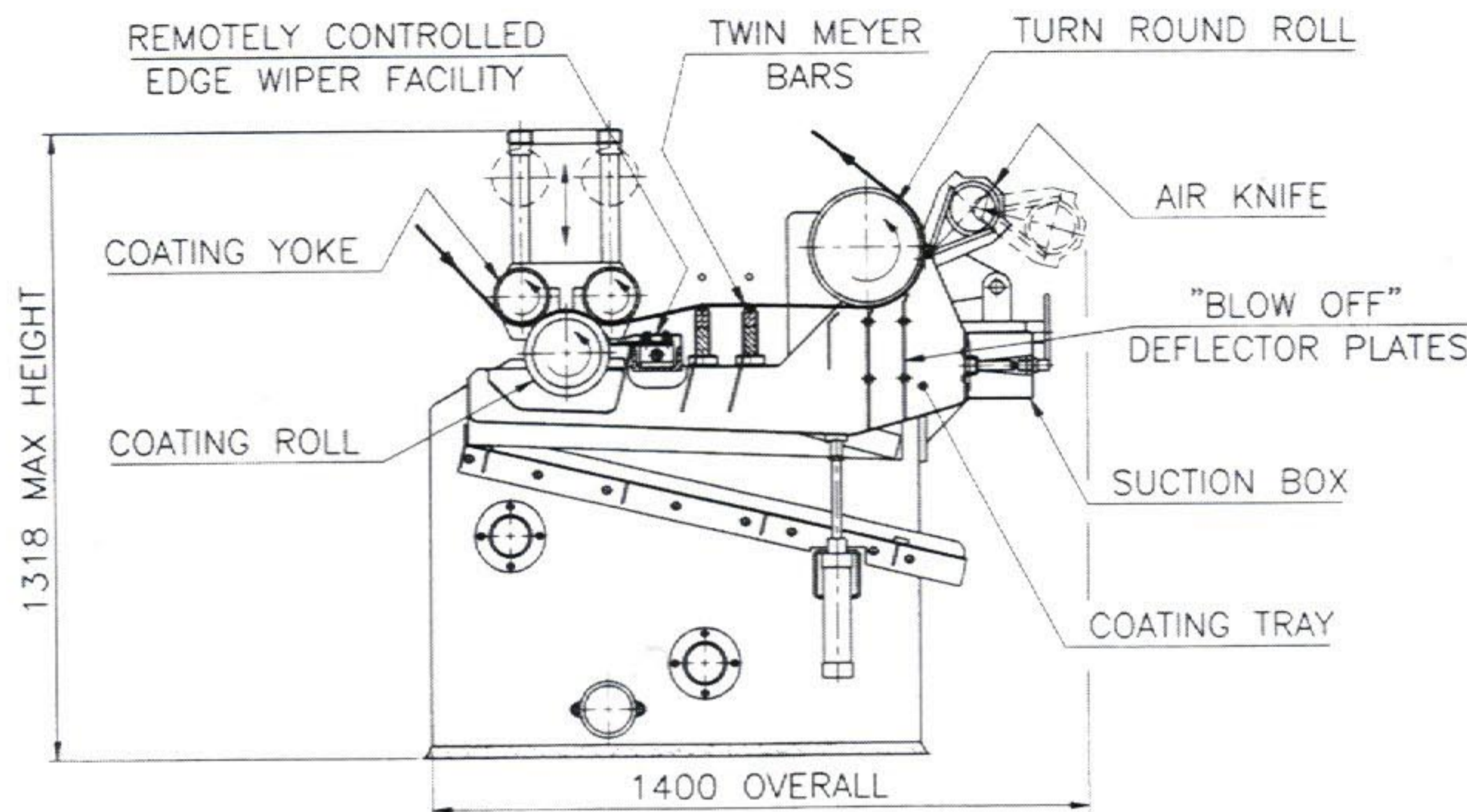


DELPRO COATERS-ADVANCED DESIGN METERING ROD COATERS



LINE DRAWING OF METERING ROD COATER WITH AIR KNIFE OR DRIVEN SMOOTHING ROLLS

Construction & Function

Delpro engineers, through innovative design and development have released the full potential of this long established, versatile, low cost system. Originally attributed to Mr Meyer, the close wound wire rod has served generations of coating engineers requiring a simple, undemanding method of applying a range of low to medium viscosity, aqueous and solvent based coatings to a variety of film, paper and textile substrates. Most operators of the traditional form of the art were agreed that they suffered from one or more of its inherent limitations. Slack edges and 'rope' marks, particularly prevalent in highly calendered papers and some biaxially oriented films produced areas of high coat weights, as also did high coating speeds; coatings at the upper ends of the coat weight and viscosity ranges, showed coating lines that reproduced the spacing of the coils of the wire-wound metering rods. Delpro have broken through these barriers, with metering rod coaters that **perform for profits**.

Features

- Fully and independently adjustable coating 'yoke' reduces 'slack edge' problems & lifts web automatically from coating applicator roll on ramp-down, or 'stop coating' command.
- Tendency driven 'turn-round' roll stretches web over Meyer rods, independent of tensions downstream of coaters in dryers.
- Two rods in tandem of stepped gauge and independently controlled, give enhanced coating control.
- Double-wound wire on rods reduces coating lines; air knife or smoothing rolls eliminate them.
- Metering rod and air knife together can achieve coating speeds up to 500m/min. with excellent results.
- Remotely controlled edge wipers allow fine adjustment of uncoated selvedge.
- Built-in 'pull-out' drive with rubber/steel nip is standard and can form master speed reference to machine.

Specification for "Delpro" Metering Rod Coaters

SPECIFICATION

Wet Coat Weight Range	5-60gsm (ca 1-30gsm dry). Low range on non-absorbent materials.
Web Speed Range	Dependant upon mix rheology and accurate control of tensions- 5 up to even 500m/min
Coating quality	- excellent, especially with smoothing rolls. Tensions - controlled within coater
Abrasive wear of wound bars	- very much reduced, with special 'over-wire' chromium plating supplied as standard

Performance, illustrations and descriptions are typical, not specific, subject to change without notice as a result of continuing development.

Delpro

Peakdale Road, Brookfield Industrial Estate, Glossop, Derbyshire, SK13 6XE England. Telephone: 01457 862776 Fax: 01457 862433.
www.delpro.co.uk e-mail: sales@delpro.co.uk

COATERS • LAMINATORS • DRYERS • CONDITIONERS

FULLY AUTOMATED REEL STANDS • ZERO SPEED SPLICERS

LIQUID HANDLING SYSTEMS • CUSTOM DESIGNED MACHINE REBUILDS & RETROFITS

TURN-KEY COATING & LAMINATING PRODUCTION LINES.